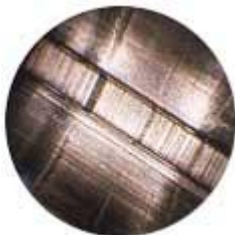


Barrel Condition Chart



Clean, polished, match grade barrel ---

As with any product, the quality of every component determines the overall performance. At the very heart of a quality barrel is the steel CPG uses barrels crafted from 416R Crucible Stainless Steel. They are pulled button-rifled, Double stressed relieved at the mill & then triple stress relieved before being shipped to CPG. Each barrel is hand lapped with a uniform land and groove diameter up to 0.0001" from breech to muzzle. These processes ensure a barrel that is strong, smooth, & very precise. CPG uses Broughton 5C™ (canted land) barrels. These barrels are showing exceptional cleaning ability, more velocity, longer barrel life, reduced bolt / breech pressure and extreme accuracy.



The condition of a new barrel ---

What is the surface condition like? Have the reamer marks been lapped out? Are there major blemishes? Was the chamber throat cut concentric, indicating a straight barrel in this region, or is it longer on one side? How smooth are the chamber and throat? Although common in most off the shelf rifles, these conditions are insidious.



Cleaning ---

Is the cleaner really working? How much more scrubbing is necessary, and where? Is my cleaning method damaging the bore? This pictures shows excessive copper build-up.



Bore Wear ---

Exactly how worn and rough is my chamber throat? How far down the bore is heat cracking present?



Fouling ---

How fouled is the bore and where does fouling occur — in the bottom of the groove, on the leading edge of the land, on the top surface of the land — or where? In addition to poor accuracy fouling of any kind can begin to increase chamber pressures.



The condition of a used barrel ---

Are there nicks, corrosion, fouling, or excessive wear?

All images were collected via Hawkeye Borescope.